

# Vaporetto<sup>®</sup>

## FLASH

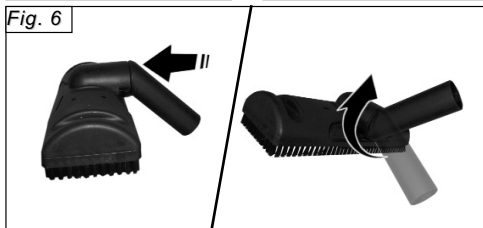
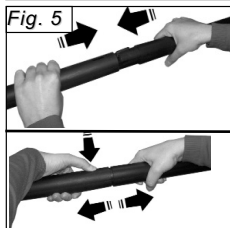
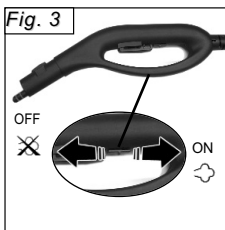
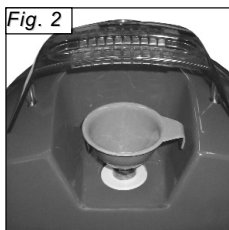
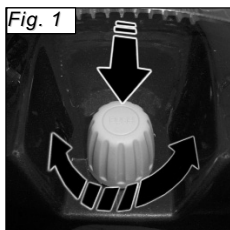
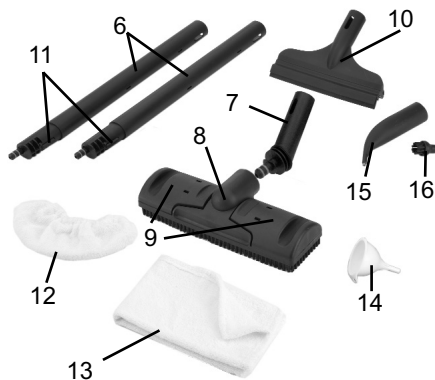
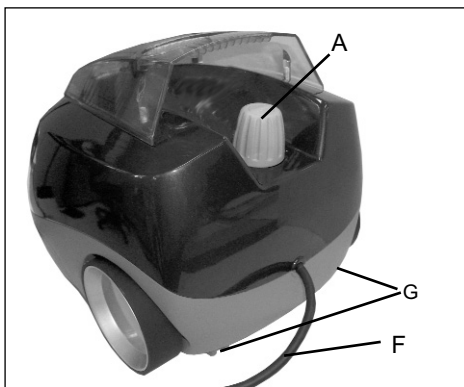
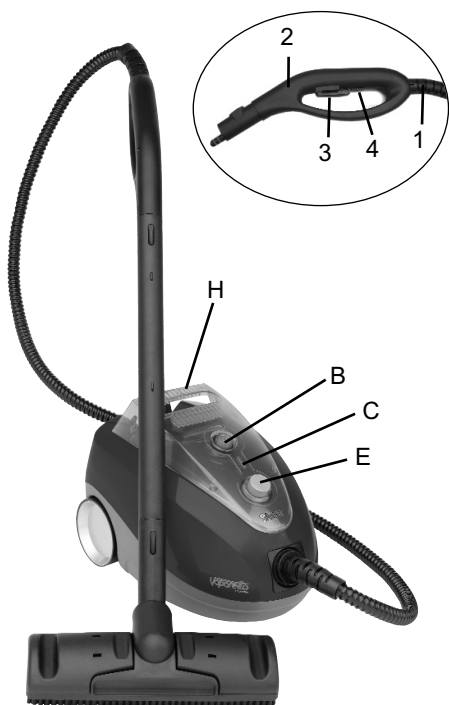


CE



 **Politi<sup>®</sup>**  
INNOVATIVE BY NATURE.

# VAPORETTO FLASH



# VAPORETTO FLASH



Read these instructions carefully before using the appliance.

## GENERATOR

- A) Safety Cap;
- B) ON/OFF BUTTON;
- C) Steam ready indicator light;
- E) Steam control knob;
- F) Power cable;
- H) Carry handle;

## ACCESSORIES

- 1) Sheath;
- 2) Steam gun;
- 3) Steam control lever;
- 4) Safety button;
- 6) Extension tubes;
- 7) Connection for large brush
- 8) Large brush;
- 9) Lever connections;
- 10) Squeegee tool;
- 11) Accessory locking button;
- 12) Terry cloth cover;
- 13) Cotton cloth;
- 14) Funnel;
- 15) 120° tool;
- 16) Round brush for 120° tool;

**CE** *This unit conforms with EC-directives 2004/108/CE (EMC) and 2006/95/CE (low voltage).*

Polti S.p.A. reserves the right to change equipment or accessory specification without prior notice.

## PRECAUTIONS

### KEEP THESE INSTRUCTIONS

- Read these instructions for use carefully before using the appliance, and make sure that anyone using the machine is familiar with these instructions and the warnings.
- **DO NOT USE THE STEAM FUNCTION ON DRAYLON, VELVET, LEATHER OR OTHER SENSITIVE FABRICS.**
- Any use which does not comply with these instructions will invalidate the warranty.
- The wiring system to which the appliance is connected must always comply with the laws in force.
- Before connecting the appliance, make sure that the mains voltage is the same as the voltage indicated on the data label of the appliance and that the power outlet is connected to earth
- Always turn off the appliance at the on/off switch before unplugging it.

- If the appliance is left unused, always disconnect it from the mains. Never leave the appliance unattended with the cable plugged into the mains.
- Always make sure the appliance is unplugged before performing maintenance work of any kind
- Do not pull the power cable out of the socket, but grasp the plug itself to avoid damage to the socket.
- Do not allow the power cable to be twisted, crushed, stretched, or come into contact with sharp or hot surfaces.
- Do not use the appliance if the power cable or other important parts are damaged.
- Do not use electric extension leads that are not authorized by the manufacturer, as they may cause damage or fire.
- If it is necessary to replace the power supply cable, please refer to the nearest Polti authorised service centre, since the use of a special tool is necessary.
- Never touch the appliance with wet hands or feet with the cable plugged into the mains.
- Do not use the appliance when barefoot.
- Do not use the appliance near a bathtub, shower or container full of water
- Never immerse the appliance, the cable or the plugs in water or another liquid.
- Use of the appliance in places where there is a danger of explosions is prohibited.
- Do not use the product with toxic substances.
- Do not lay the hot appliance on surfaces sensitive to heat.
- Do not leave the appliance exposed to wind or rain.
- Do not place the appliance near a live element, an electric stove or any other source of heat.
- Do not expose the appliance to extreme temperatures
- Never let children or people who are not familiar with how the appliance works use it.
- Do not press the buttons hard or with a pointed object such as a pen.
- Always rest the appliance on a stable surface.
- In case of accidental fall of the appliance it is necessary to have it checked by an authorized Polti Service Centre as the internal safety features may have been affected.
- In case of breakdown or malfunction switch off the appliance and never attempt to disassemble it, but refer to an authorized Service Centre.
- To avoid prejudicing the safety of the appliance,

# VAPORETTO FLASH

use only original spare parts and accessories approved by the manufacturer.

- Do not wind the power cable around the appliance, especially when the appliance is still hot.
- During refilling with water, switch off and disconnect the appliance from the mains.
- It is necessary to keep the unit in horizontal position during operation.
- Do not direct the steam jet onto electrical and/or electronic appliances.
- Let the appliance cool down before cleaning it.
- Before storing the appliance make sure that it has completely cooled down.
- This appliance is equipped with safety devices which are to be replaced only by a suitably qualified technician.
- Do not direct the steam jet at people, animals or debris.
- Never place your hands inside the jet of steam.



**ATTENTION:**  
**Danger of scalding!**

- Do not put any detergent or chemical substance in the boiler. Water by its nature contains magnesium, mineral salts and other deposits which in hard water areas can contribute to limescale build up in the boiler. To avoid these problems, it is necessary to swirl out with tapwater and empty the boiler after every 3 or 4 uses. In very hard water areas we recommend the use of our KALSTOP, a special natural-base decalcifier which inhibits and breaks down limescale, making it easy to remove just by swilling out the tank with a little tapwater. This is a preventive against scale build-up and protects the metal walls of the steam generator tank. KALSTOP is available from Polti dealers or by mail-order from your Polti Service Centre.
- **We recommend you use original Polti products only, as products of other brands may not be suitable for use in Polti products and could cause damage.**
- **Never use distilled water or scented water.**
- Make sure the safety cap is fully and correctly screwed on, otherwise you may experience steam escaping from the cap.
- Do not refill the boiler while it is still hot, let it cool down for a few minutes before refilling.
- Do not empty the appliance when the water in the boiler is still hot.
- **Do not open the safety cap while the appliance is in use.**
- This appliance is not intended for use by persons (including children) with reduced physical, sensory or mental capabilities, or lack of experience

and knowledge, unless they have been given supervision or instruction concerning use of the appliance by a person responsible for their safety.

- Children should be supervised to ensure that they do not play with the appliance.
- The appliance must not be used if it has fallen, been dropped or when it has visible signs of damage or leaks.
- The electric cable (Y type power cord) must not be replaced by the user. The cord must always be replaced by a qualified technician from one of our authorised service centres.

## ***CORRECT USE OF THE PRODUCT***

This appliance is intended for home use as a steam cleaner as described and in accordance with the instructions provided in this manual. Please read these instructions carefully and keep them, as you may find them useful in future

**Polti declines liability for any damage or accident derived from any use of Vaporetto which is not in conformity with the instructions contained in this booklet.**

## ***ATTENTION***

Directive 2002/96/EC (Waste Electrical and Electronic Equipment - WEEE): information for users  
This product complies with EU Directive 2002/96/EC.



The crossed-out wastebasket symbol on the appliance means that at the end of its useful lifespan, the product must be disposed of separately from ordinary household wastes.

The user is responsible for delivering the appliance to an appropriate collection facility at the end of its useful lifespan.

Appropriate separate collection to permit recycling, treatment and environmentally compatible disposal helps prevent negative impact on the environment and human health and promotes recycling of the materials making up the product. For more information on available collection facilities, contact your local waste collection service or the shop where you bought this appliance.

## ***IMPORTANT***

Before leaving our factory all our products are rigorously tested. For this reason, your VAPORETTO may contain some residual water in the boiler from the testing.

## PREPARATION

- Unscrew the safety cap (A) while pressing it down (fig.1). Fill the boiler with water using the funnel provided (14), being careful not to let it overflow (Fig.2).

Water by its nature contains magnesium, mineral salts and other deposits which in hard water areas can contribute to limescale build up in the boiler. To avoid these problems, it is necessary to swirl out with tapwater and empty the boiler after every 3 or 4 uses. In very hard water areas we recommend the use of our KALSTOP FP 2003, a special natural-base decalcifier which inhibits and breaks down limescale, making it easy to remove just by swilling out the boiler with a little tapwater. This is a preventive against scale build-up and protects the metal walls of the boiler. KALSTOP is available from Polti dealers or by mail-order from your Polti Service Centre.

- Screw the cap back on all the way while pressing it down.

Make sure the patented safety cap (A) is fully and correctly screwed on, otherwise you may experience steam escaping from the cap.

**Do not open the safety cap while the appliance is in use.**

- Connect the power cable into an earthed power supply of the correct voltage.

**WARNING:** Do NOT under any circumstances put or leave the funnel in the water filling aperture of the appliance when the appliance is connected to the mains electricity supply. Danger of burns!

## HOW TO USE

- Press the ON/OFF button (B).
- **Wait until the steam ready indicator light (C) comes on. At this point your VAPORETTO is ready for use.**
- The steam gun (2) has a safety button (4) to prevent accidental dispensing of steam by children or people who don't know how to use the appliance. When the button (4) is set to "OFF" the lever commanding steam is locked (fig.3). If you need to leave the sheath momentarily unsupervised while the appliance is turned on, set the safety switch to "OFF" (fig.3). To start using steam, set the button (4) to "ON" and work the steam lever (3).

**The first time you use the appliance, a few drops of water may come out because the temperature has not stabilised perfectly inside the sheath. We recommend you direct the first jet of steam onto a cloth, until the jet of steam is**

**uniform.**

**NOTE:** The steam ready indicator light (C) will go on and off which you are using your VAPORETTO. This indicates that the electrical resistance is working to keep pressure constant and should be considered normal.

## STEAM REGULATION FEATURE

VAPORETTOs are equipped with a steam regulator control (E) (Fig.4). You can use this control to increase the steam flow by turning in anti-clockwise direction. Turning the control in a clockwise direction reduces the steam flow. Here are some suggestions for the choice of steam flow level:

- **Strong steam:** for encrusted dirt, stains, sanitising, grease.
  - **Normal steam:** for carpets, rugs, glass, tiles etc.
  - **Delicate steam:** for vaporising plants and cleaning delicate fabrics, upholstery, wallpaper etc.
- Please read separate warning about use on draylon, velvet and other delicate fabrics, or on sensitive wood surfaces.

## CONNECTING ACCESSORIES

- To connect up accessories, simply push them together until the accessory snaps into place (11) (fig.5).
- To release accessories, simply hold down the button (11) and separate the components.
- Check that accessories are connected properly before using them.

## LOW WATER LEVEL

When no more steam comes out of the appliance, do as follows:

- Switch off the machine at the generator on/off switch (B)
- Disconnect the power supply cable (F) from the mains.
- Wait for a few minutes to allow the generator boiler to cool down.
- Unscrew anti-clockwise the patented safety cap (A).
- When cool, proceed to carefully refill the boiler as described in paragraph 1 of the section "Preparation for Use". If refilling the generator when not completely cooled, we recommend that you CAREFULLY pour only very small quantities of water at each pouring, so as to avoid spitting from the boiler. Cover exposed skin whilst filling.

## TIPS FOR BETTER UNIT PERFORMANCE

### WARNINGS

- DO NOT USE ON leather, wood or delicate fabrics especially dralon, velvet and other pile surfaces.
- For cleaning leather, wood or delicate fabrics especially dralon, velvet and other pile surfaces, consult the manufacturers instructions. Clean only by using the hand gun at a safe distance together with a soft cloth and always do a test on a non visible part of the item first or on a sample. Allow the test area to dry completely before observing results and effects on surface or colour before proceeding to clean further areas.
- For cleaning wood surfaces (furniture, doors etc.) take great care as a too long application of the steam could alter the waxed appearance, the shine or the colour of the surfaces cleaned. We therefore recommend you to apply the steam on such surfaces only for brief periods or to clean these surfaces using a cloth first held in the steam.
- Please pay particular attention while cleaning brick floors: a too long application of steam could damage wax, brightness or colour of these surfaces.
- For delicate surfaces (e.g. synthetic materials, lacquered surfaces etc.) we recommend that the small brush should always be covered with at least two cloths to reduce the intensity of the steam, and (on machines with steam variation control) with the steam set at low level. Always test first on a non-visible area, allow to dry thoroughly, and if successful, make sure to use exactly the same tool, technique, steam level and steam jet distance.
- If cleaning glass surfaces in particularly low temperatures preheat the glass using the hand gun from about 50 centimetres distance from the surface to be cleaned.
- For care of your plants vaporise at a minimum distance of 50 centimetres.

### STEAM GUN (2)

The steam gun can be used directly on all spots requiring a stronger, closer treatment without connecting the brushes. The more resistant the stain, the closer you should hold the gun, the steam pressure and temperature being higher at the source. Always wipe with a dry cloth (or a slightly abrasive sponge if the spot is a difficult one to remove) after using the gun. Steam gun is particularly efficient at:

- breaking down rug and carpet stains before they are treated with the large brush;
- cleaning stainless steel surfaces, panes, mirrors, enamelled surfaces;
- cleaning hard-to-reach corners, such as stairs, window sills, door posts;
- cleaning cooking top knobs, taps bases
- cleaning window shutters, heaters, car interiors;
- spraying plants (from a distance);
- removing odours and creases from clothes.

To reach higher points, the steam gun can be connected to one or both extension tubes.

### LARGE BRUSH (8)

**Connect the large brush connection (7) to the large brush (8) as shown in the figure 6.**

To clean floors, place the brush on the cotton cloth (13), fix it in place with the lever hooks provided (9), and move the appliance back and forth without applying pressure. When one side of the cloth is dirty, turn it over. Use the brush without the cloth on particularly dirty areas or encrustations and to clean between tiles, using a sideways movement to get dirt out. Use the steam gun directly in hard-to-reach corners and on stains, wiping them with the cloth afterwards. On washable vertical surfaces or wallpaper and on light fixtures, cover the brush with a dry cloth and proceed in the same way as for the floor. Use the cloth provided (13) or a terry cloth (such as an old towel). To clean glass surfaces, wrap the brush with a cotton cloth that will not leave fluff behind, anchor it in place with the lever hooks provided (9), and wipe it over the glass to remove any grease and traces of cleaning products. Finish by spraying with the steam gun and then drying the surface. In particularly cold weather, preheat the glass by spraying with steam from 50 cm away before cleaning. VAPORETTO guarantees maximum hygiene and brightens up colours on synthetic and wool rugs and carpets of all kinds on floors and walls. Pass the brush over the surface without the cloth to bring out dirt, cover the brush with a cotton cloth held in place by the lever hooks provided (9), and then go over the surface again to pick up the dirt. You may fold the cloth over two or three times if the carpet is particularly delicate. Work quickly and without applying pressure to the carpet, moving the brush forward, backwards and sideways without stopping too long in the same place. This treatment may be repeated as many times as you like without damaging the surface of the carpet. If your carpet is particularly dirty or saturated with cleaning products, don't apply too much pressure, and don't worry: results will appear after you have used the

VAPORETTO on it a few times. To get rid of stubborn stains, treat them directly with the spray gun from a distance of 5 - 10 cm and wipe energetically with a cloth before proceeding with the treatment described above.

### SQUEEGEE ATTACHMENT (10)

Windows are washed in 2 stages:

- steaming the surface to dissolve dirt, using the steam control lever (3);
- wiping with the squeegee attachment (10) working from the top downwards, making sure the rubber wiper fits closely to the glass to remove dirt without releasing steam.

The squeegee attachment (10) may also be used as a small steam brush for cleaning all areas where use of a large brush would be inconvenient. Just cover the squeegee attachment with a terry cloth cover (12) and use it to clean fabrics in the home (after testing on a hidden corner), upholstery, encrusted dirt...

### 120° TOOL (15)

The 120° tool, which may be connected directly with the steam gun, has an inclined nozzle for directing the jet of steam onto hidden, hard-to-reach spots for cleaning radiators, window and door frames, bathroom fixtures and shutters. To remove dirt encrusted on small surfaces such as cooker elements, roller blinds and bathroom fixtures or between tiles, apply the round brush (16) to the 120° tool, which combines the mechanical action of bristles with steam to get rid of even the stubbornest dirt.

**N.B.:** do not use the brush (16) on particularly delicate surfaces as it could harm them.

### CARE OF YOUR VAPORETTO

- Before attempting any maintenance operation, make sure to always disconnect the appliance from the mains
- To clean the body of the appliance, simply use a moist cloth.
- Clean accessories by rinsing them in running water.

